

LCD 1200

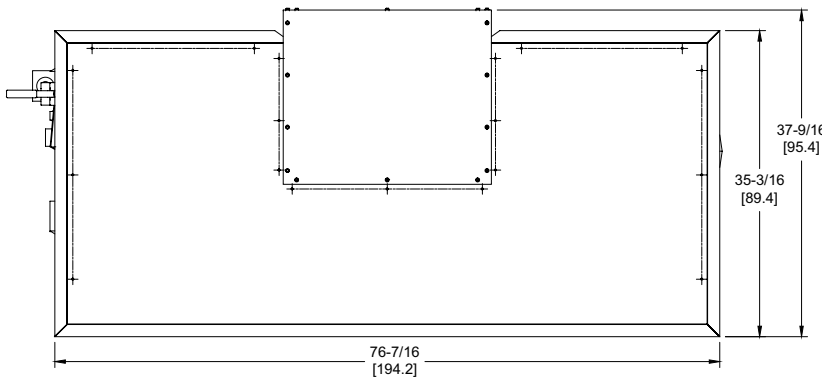
Category I or Category III Appliance

(see Installation and Operation Manual for venting information)

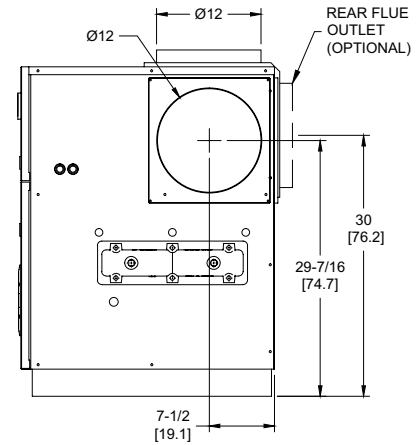
CODE OPTIONS

CSD-1

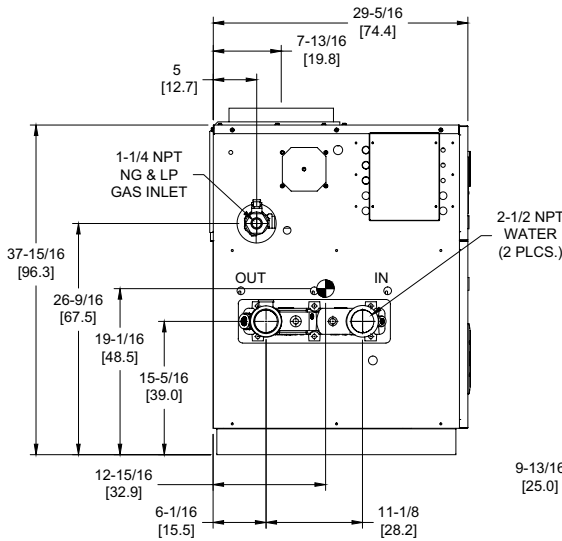
UTC Lockout/Reset Control
Manual Reset LWCO



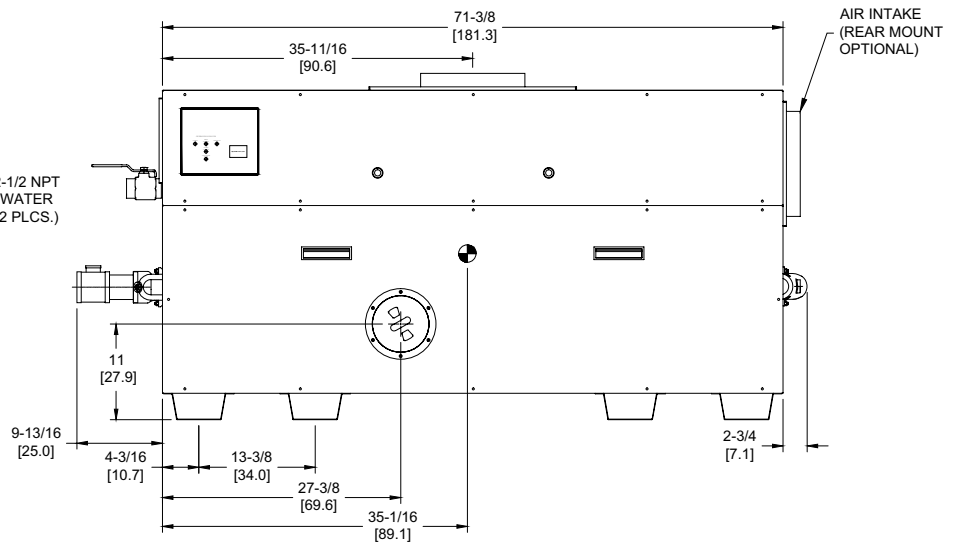
OUTDOOR TOP VIEW



RIGHT VIEW



LEFT VIEW




FRONT VIEW

RSUB-20-F

Boilers & Water Heaters not available for sale in Canada due to NRCAN regulations.

Notes:

1. Dimensions are approximate and should not be used to "rough-in" equipment.
2. Dimensions are subject to change without notice.
3. All dimensions are in inches (cm).
4.  Symbol indicates center of gravity.

SLCD-1200-9

BOILER CERTIFIED RATINGS & CAPACITIES

| | | | |
|--------------------------------|---------------------|-----------------------------------|--------------------|
| Fuel Type | Natural/Propane Gas | Boiler FLA | 11.0* |
| Input BTU/hr. | 1,200,000 / 352 kW | Min. Gas Pressure Required | 7" WC** |
| Output BTU/hr. | 984,000 / 288 kW | Max. Gas Pressure Allowed | 14" WC |
| Electrical Requirements | 120VAC/ 1 ph/ 60 hz | Operating Weight | 781 lbs. / 355 kg. |

BOILER / WATER HEATER TRIM & CONTROLS

| | | | |
|----------------------------------|----------------------------|--------------------------|---------------------------|
| Main Gas Valve | Honeywell V8944B 1-1/4" | Pilot Valve | Honeywell VR8205Q |
| Firing Valve | Honeywell B200T1041 1-1/4" | Air Switch | Cleveland RSS-495 |
| Safety Valve | Honeywell V48A 1-1/4" | Blower Motor | (2) 1/4 hp - FLA 10.2 |
| Ignition Control | UTC 1003-61A | Relief Valve - LW | 3/4" x 3/4" set @ 125 psi |
| Operating Control (LB/LW) | Jumo | Relief Valve - LB | 1" x 1-1/4" set @ 50 psi |
| High Limit (LB/LW) | Jumo | Flow Switch | TACO |

A.S.M.E.

| | | | |
|---------------------------------|------------------------------|--------------------|-----------------------|
| ASME Sect IV Htg Surface | 109.7 Sq. Ft. / 10.19 Sq. M. | Design Data | Max. 160 psig & 250°F |
| Water Volume | 2.3 gal / 8.8 Liters | | |

* Add circulator amps.

** For incoming gas pressures lower than 7"WC natural or 11"WC propane, consult factory.

BOILER TEMPERATURE RISE / PRESSURE DROP


| 20°F / 11.1°C | | | | 25°F / 13.9°C | | | | 30°F / 16.7°C | | | | 35°F / 19.4°C | | | |
|---------------|------|---------------|------|---------------|-----|---------------|------|---------------|-----|---------------|------|---------------|-----|---------------|-----|
| Flow Rate | | Pressure Drop | | Flow Rate | | Pressure Drop | | Flow Rate | | Pressure Drop | | Flow Rate | | Pressure Drop | |
| GPM | L/s | Ft | kPa | GPM | L/s | Ft | kPa | GPM | L/s | Ft | kPa | GPM | L/s | Ft | kPa |
| 98.4† | 6.2† | 8.14 | 24.0 | 78.7 | 5.0 | 5.38 | 15.9 | 65.6 | 4.1 | 3.84 | 11.3 | 56.2 | 3.5 | 2.89 | 8.5 |

† Flow exceeds recommended maximum use a greater temperature rise or consult manufacturer.
Cupronickel heat exchanger should be considered.

WATER HEATER HOURLY RECOVERY CAPACITY (GPH & LPH)

| | | | | | | | | | | | |
|------|-------|------|------|------|------|-------|------|-------|------|-------|------|
| 40°F | 22°C | 60°F | 33°C | 80°F | 44°C | 100°F | 56°C | 120°F | 67°C | 140°F | 78°C |
| 2960 | 11190 | 1974 | 7460 | 1480 | 5595 | 1184 | 4476 | 987 | 3730 | 846 | 3197 |

Boilers & Water Heaters not available for sale in Canada due to NRCan regulations.

| | | |
|---------------------|-------|---|
| REP FIRM | _____ | LCD 1200 |
| SUBMITTED BY | _____ | |
| JOB NAME | _____ | |
| ARCHITECT | _____ | |
| ENGINEER | _____ | |
| CONTRACTOR | _____ | |
| DATE | _____ | Category I or Category III Appliance (see Installation and Operation Manual for venting information) |
| | |  RELIABLE. BOLD. INNOVATIVE. |
| | | A Division of Mestek, Inc. Westfield, MA 01085 (413) 564-5515 |